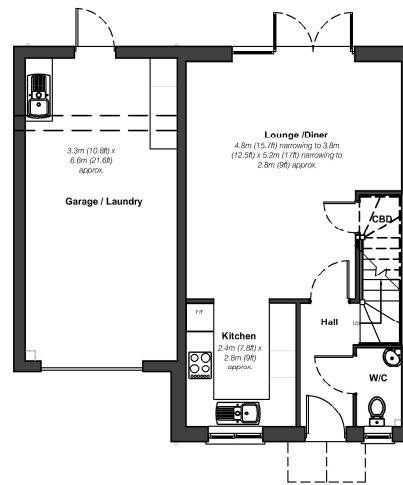




# ST CLEATHER 2

## PLOT 48

- A FOUR BEDROOM LINK DETACHED PROPERTY
- DOUBLE GLAZED UPVC WINDOWS
- GAS CENTRAL HEATING
- MASTER BEDROOM WITH EN-SUITE
- GARDENS
- GARAGE & PARKING
- 10 YEAR NHBC WARRANTY



4B,7P House  
Ground Floor Plan



First Floor Plan - GIA. 55.2 sqm

# £199,950

**VIEWING/REGISTRATION**

By appointment only. Please telephone 01579 370740

*Disclaimer: These particulars are for information only and do not constitute part or all of an offer or contract. The measurements indicated are supplied for guidance only and as such must be considered incorrect. Potential buyers are advised to recheck the measurements before committing to any expense. These details comply with the Property Misdescriptions Act 1991.*

Homes to be proud of that won't cost the earth

Registered office: Polhilsa, Stoke Climsland, Callington, Cornwall PL17 8PP  
T: 01579 370740 F: 01579 370920 E: info@sellecknicholls.co.uk W: www.sellecknicholls.co.uk  
Directors A.D. Selleck; S.R.Selleck Registered in England number: 3781800 Selleck Nicholls Homes is a trading name of Selleck Nicholls Limited.

