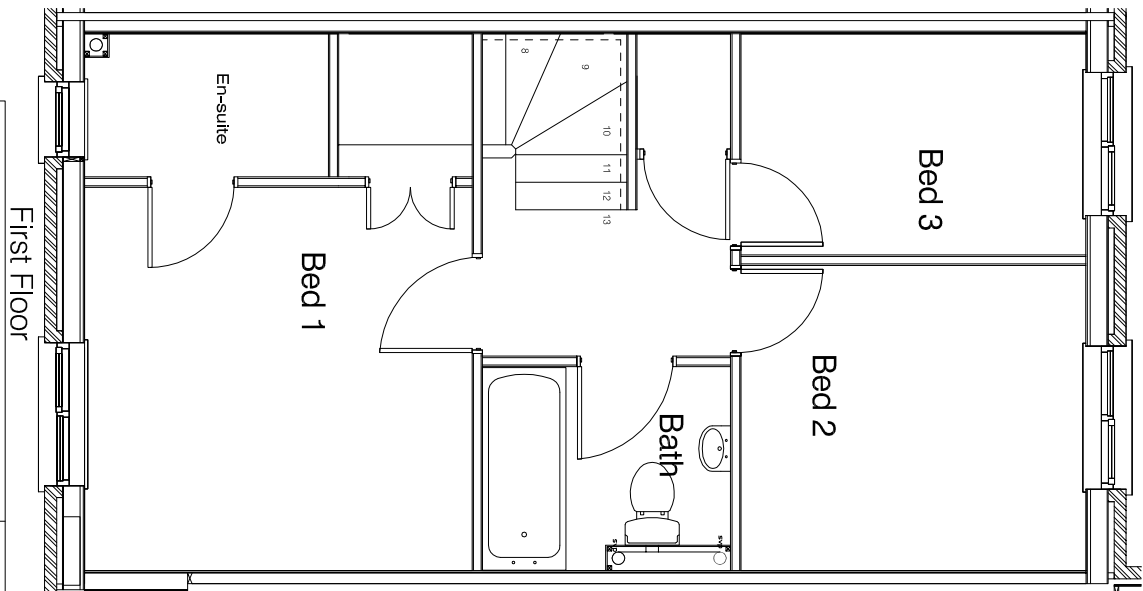
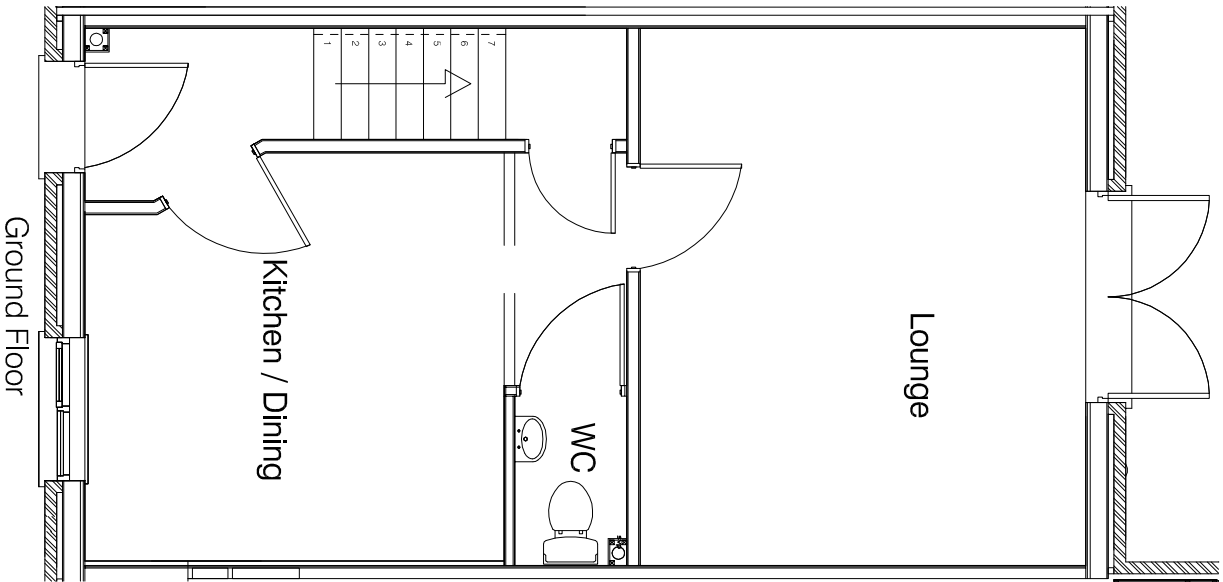


Rev.	Revision note	Date	Signature	Chk'd
-	-	-	-	-



Whilst every effort has been made to ensure the accuracy of these details their accuracy is not guaranteed. Selleck Nicholls Group Ltd reserves the right to alter the specification in accordance with our aim for constant improvement.



Pollha Sea View, Chiverton, Cornwall, PL17 8PP
Tel: (01579) 370740 Fax: (01579) 370820
Web: www.sellecknicholls.co.uk E-mail: info@sellecknicholls.co.uk

Site
Redmoor Parc Phase 2
Kelly Bray

St Mabyn
3B4P H

Drawing

© 2009 All rights reserved Selleck Nicholls Ltd.